

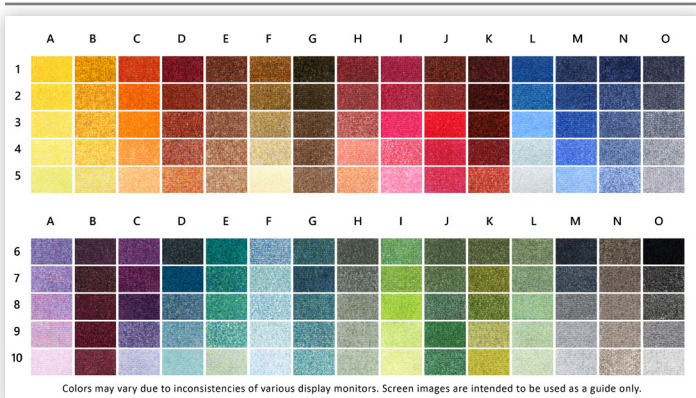
ColorStar® Impressions HD Logo Mats

Logo • Carpeted (Wiper) Mats • Indoor

ColorStar Impressions HD mats feature your custom logo or artwork digitally printed in high definition on eco-friendly PET (polyethylene terephthalate) carpet.



- **Photographic-Quality Print** – Logos and designs are digitally printed at 76 dpi on 32-ounce per square yard carpet, making fine details, shading, and 3D images achievable
- **Eco-Friendly** – PET (polyethylene terephthalate) carpet surface contains 100% recycled content reclaimed from plastic
- **Fade Resistant** – PET yarn has excellent color-fastness and is resistant to fading from repeated washing/cleaning
- **Stain Resistant** – PET yarn is naturally resistant to staining
- Choose from 150 standard colors
- Available with choice of SBR (48 mil) or nitrile rubber (52 mil, 65 mil, 90 mil, or 100 mil) backing
- Commercially launderable (when backed with nitrile rubber)



150 Standard Color Options

Photographic-Quality

Colors may vary due to inconsistencies of various display monitors or printers (if you're viewing a printed version of this document). Color images are intended to be used as a guide only.

ColorStar® Impressions HD Logo Mats

Logo • Carpeted (Wiper) Mats • Indoor



COLORSTAR®
eco-friendly, high-performance mats

Product No. 973

Size (ft.)	Size (in.)	Product Weight*
2' x 3'	24" x 35"	4.2 lbs.
3' x 4'	35" x 47"	6.9 lbs.
3' x 5'	35" x 59"	7.9 lbs.
3' x 10'	35" x 119"	16.2 lbs.
4' x 6'	45" x 69"	12.4 lbs.
4' x 8'	45" x 95"	17.1 lbs.
5' x 8'	58" x 95"	21.2 lbs.
5' x 10'	58" x 119"	27.3 lbs.
6' x 10'	68" x 119"	33.3 lbs.
6' x 12'	68" x 143"	40.9 lbs.

*Product Weight based on 48-mil backing

Note: Custom sizes available in widths of 3' (35"), 4' (45"), 5' (58"), or 6' (68") and lengths up to 40'.

Mat sizes are approximate as rubber shrinks and expands in conjunction with temperature and time.
Tolerable manufacturing size variance is 3-5%.



M + A MATTING

800.665.5336

www.mamattng.ca