

# Complete Comfort™ Mats

## Anti-Fatigue Mats • Indoor

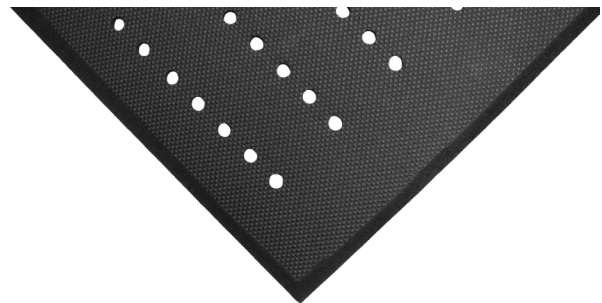
Complete Comfort mats are ergonomically superior anti-fatigue mats designed for wet or dry environments.



- **Comfortable** – 5/8" thick nitrile/PVC-blended foam provides superior anti-fatigue properties
- **Clean** – Anti-microbial treatment provides lifetime protection from odors and degradation
- **Safe** – Beveled edges provide a safe transition from floor to mat; certified high-traction by the National Floor Safety Institute (NFSI)
- **Easy to Clean** – Lightweight and flexible for easy handling and cleaning
- Grease and oil resistant; chemical resistant
- Available with drainage holes for use in wet areas



Complete Comfort



Complete Comfort with drainage holes

# Complete Comfort™ Mats

Anti-Fatigue Mats • Indoor

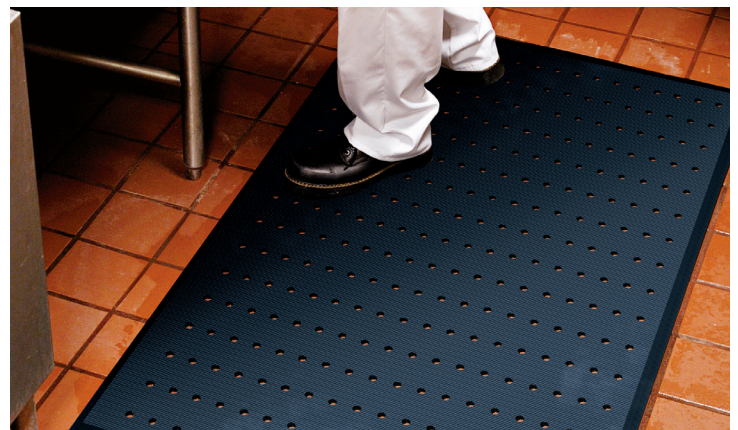


## Product No. 494, 496 (with holes)

Size (ft.)	Size (in.)	Product Weight*
2' x 3'	24" x 36"	6.3 lbs
3' x 4'	36" x 48"	10 lbs
3' x 5'	36" x 60"	13.8 lbs
3' x 10'	36" x 120"	25.6 lbs
4' x 6'	48" x 72"	20 lbs
4' x 8'	48" x 96"	26.7 lbs

**Note:** Available in custom sizes with widths of 3' (36"), 4' (48") and whole foot lengths up to 75'.

Mat sizes are approximate as rubber shrinks and expands in conjunction with temperature and time. Tolerable manufacturing size variance is 3-5%.



M + A MATTING

800.665.5336

[www.mamattng.ca](http://www.mamattng.ca)