

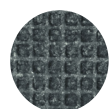
Clean Stride[®] Mats

Specialty Mats • Indoor

The Clean Stride mat features a WaterHog mat followed by an adhesive surface that captures smaller dust and dirt. Just two steps on a Clean Stride adhesive insert removes over 90% of dirt particles, making this mat ideal for clean rooms, healthcare facilities, school gymnasiums, server rooms, and other areas sensitive to dirt and dust particles.



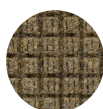
- Raised nubs on the WaterHog mat remove dirt and moisture from shoes and trap it below foot level while the adhesive insert removes any remaining dirt or dust particles
- Adhesive inserts sold separately, each with 60 numbered layers
- Available with smooth or cleated backing
- Not recommended for wet areas



Bluestone



Bordeaux



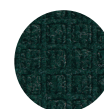
Camel



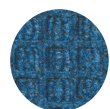
Charcoal



Dark Brown



Evergreen



Medium Blue



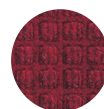
Medium Brown



Medium Grey



Navy



Red/Black

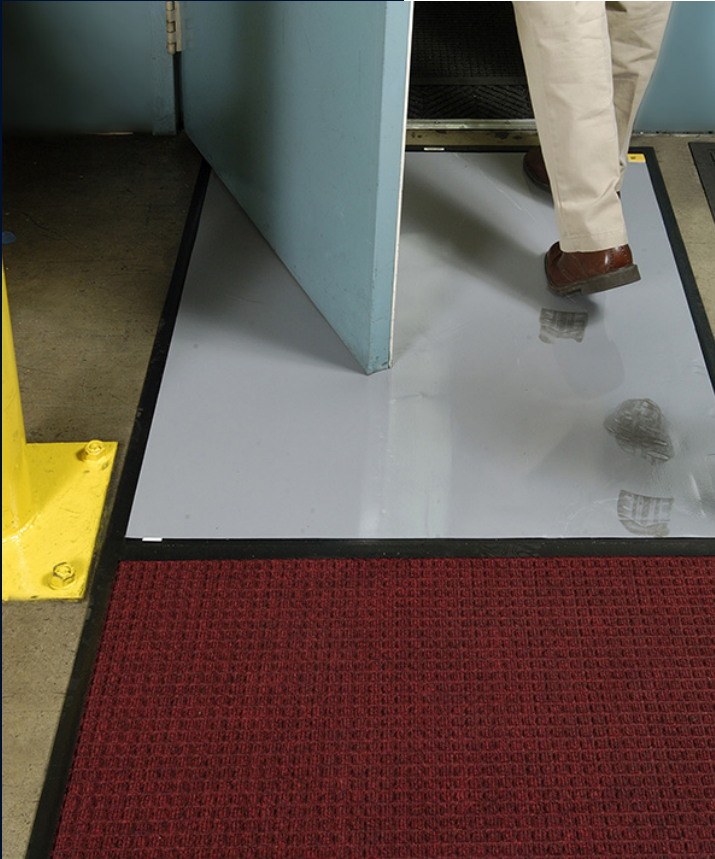


Solid Red

Colors may vary due to inconsistencies of various display monitors or printers (if you're viewing a printed version of this document). Color images are intended to be used as a guide only.

Clean Stride® Mats

Specialty Mats • Indoor



Product No. 410 (frame only)
Product No. 411 (frame with WaterHog)

Frame Type	Size (in.)	Shipping Weight
Rubber frame*	26.5" x 32"	5 lbs.
Rubber frame**	36.5" x 46"	10 lbs.
WaterHog with rubber frame*	26.5" x 63.5"	9 lbs.
WaterHog with rubber frame**	36.5" x 92.5"	18 lbs.

Clean Stride® mat frames do not include Clean Stride® inserts

* Use 24" x 30" inserts

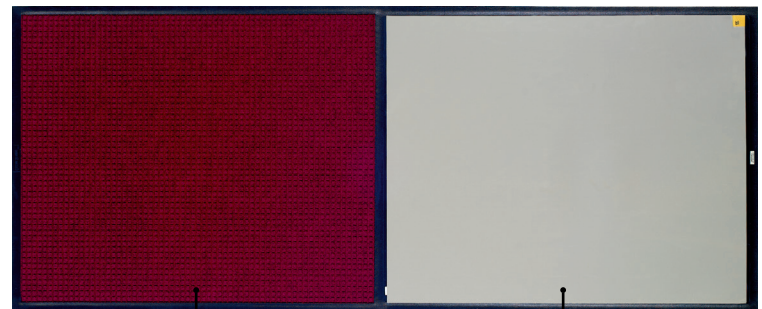
** Use 34" x 44" inserts

Product No. 412 (inserts)

Unit	Size (in.)	Shipping Weight
1 - 60 layer insert	24" x 30"	4 lbs.
1 - 60 layer insert	34" x 44"	11 lbs.

Please note, mat sizes are approximate as rubber shrinks and expands in conjunction with temperature and time.

Tolerable manufacturing size variance is 3-5%.



WaterHog Mat

Raised nubs remove dirt & moisture trapping it below shoe level

Adhesive Insert

Adhesive insert captures smaller dust and dirt



M + A MATTING

800.665.5336

www.mamattng.ca